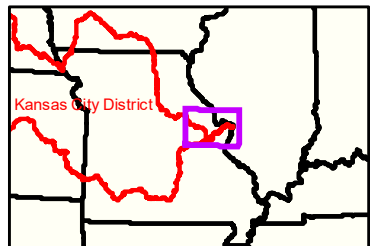


Source: Esri, Maxar, GeoEye, Earthstar Geographics, CNES/Airbus DS, USDA, USGS, AeroGRID, IGN, and the GIS User Community

Hermann Gage = 17.48 at time of collection 1 April 2021"

Gage_L



LEGEND

| | | | | | | | | | |
|--|----------|--|----------------|--|----------------|--|-------|--|-----------|
| | < 8 | | < 8 ft | | Green Passing | | Green | | Green CAN |
| | 8 - 9 | | 8 - 9 ft | | Red Passing | | Red | | Red NUN |
| | 9 - 9.5 | | 9 - 10 ft | | Green Crossing | | Red | | |
| | 9.5 - 10 | | 10 - 12 ft | | Red Crossing | | Green | | |
| | 10 - 12 | | River Mile | | | | Red | | |
| | 12 - 14 | | Sailing Line | | | | Green | | |
| | 14 - 16 | | BSNP Structure | | | | Red | | |
| | > 16 | | Levee | | | | Green | | |

Buoy

Green CAN
 Red NUN

Green
 Red
 Junction

0 312.5 625 937.5 1,250 2,500 Feet



NOTES:
Horizontal Coordinate System:
World Geodetic System of 1984 (WGS84), projected to the Universal Transverse Mercator (UTM) Zone 15 North.
Distance units in U.S. Survey Feet

Vertical Datum:
Soundings are shown in feet and indicated depths are referenced to water surface at time of collection.

The information depicted on this map represents the results of a survey conducted on the date indicated and can only be considered to represent the general condition existing at that time.

The location of navigation aids are based on and provided by the U.S. Coast Guard.



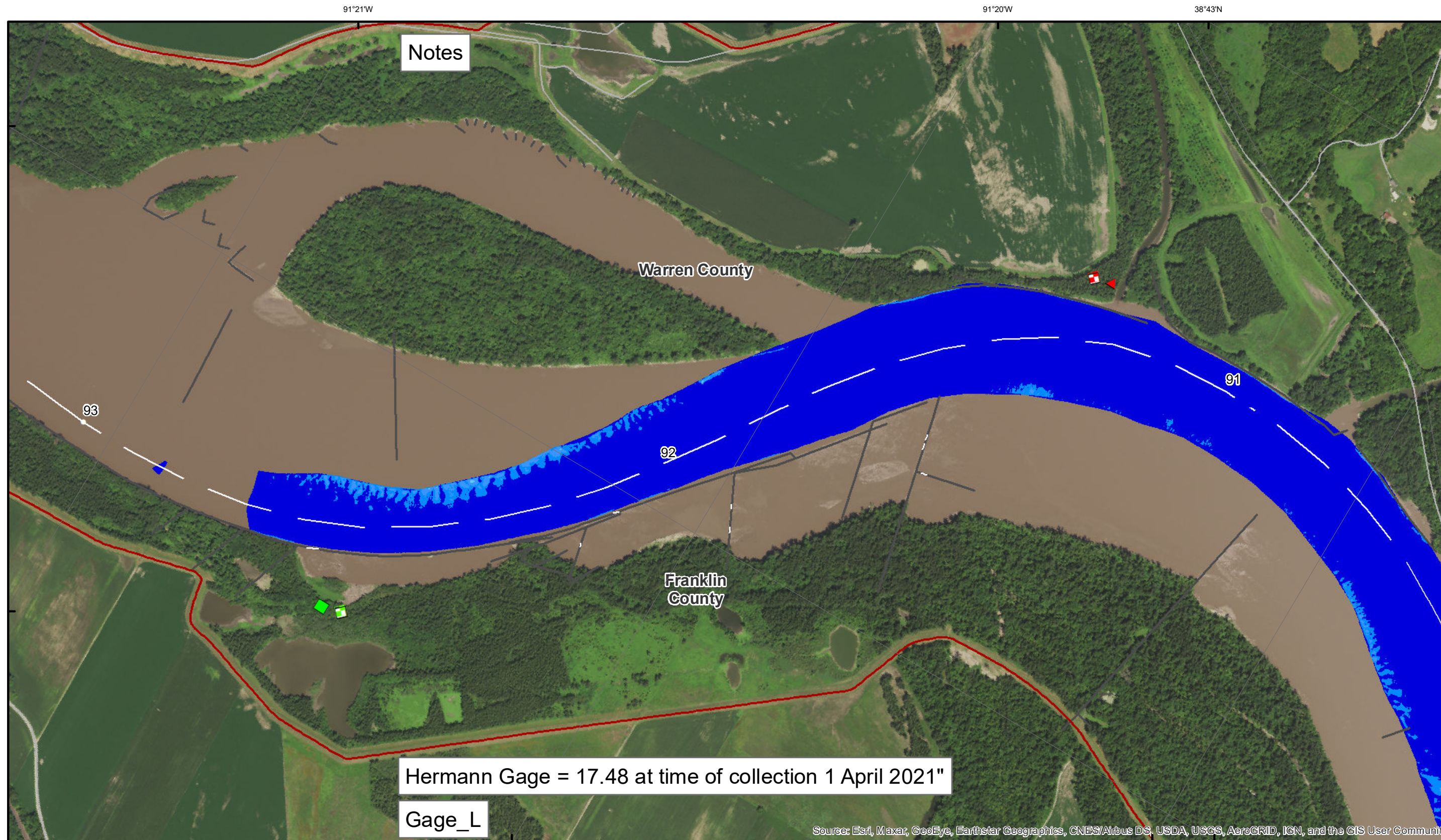
DISCLAIMER: The U.S. Army Corps of Engineers (USACE) provides this information for informational purposes only. It is not intended for use in any legal proceeding or as a basis for any other action. The USACE makes no warranty, express or implied, regarding the accuracy, reliability, or completeness of the information provided. The USACE is not responsible for any errors or omissions in this information. The USACE is not liable for any damages, including consequential damages, arising from the use of this information. The USACE is not responsible for any actions taken based on this information. The USACE is not responsible for any actions taken based on this information.

| | |
|--|------|
| KANSAS CITY DISTRICT MISSOURI RIVER AREA OFFICE | |
| Submitted by: | MRAO |
| Reviewed by: | MRAO |
| Checked by: | MRAO |

Survey Information

MO_01_LMR
MO_01_LMR_20210401_CS_90_0_92_5_SORT
01 April 2021

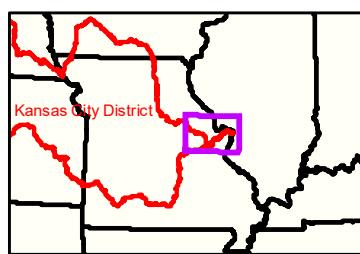
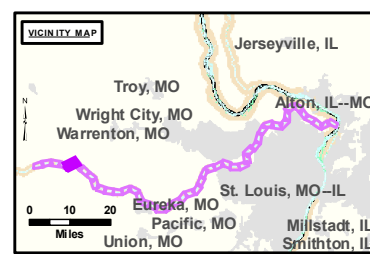
Sheet Number
41 of 46



DISCLAIMER: The U.S. Army Corps of Engineers (USACE) provides this information as a service to the public. It is not intended to be used for any purpose other than that for which it was provided. The USACE makes no warranty, express or implied, regarding the accuracy, reliability, or completeness of the information. The user assumes all liability for any use of this information. The USACE is not responsible for any damage or loss resulting from the use of this information. The USACE is not responsible for any damage or loss resulting from the use of this information.

| KANSAS CITY DISTRICT MISSOURI RIVER AREA OFFICE | |
|--|------|
| Submitted By: | MRAO |
| Reviewed By: | MRAO |
| Checked By: | MRAO |

Survey Information
 MO_01_LMR
 MO_01_LMR_20210401_CS_90_0_92_5_SORT
 01 April 2021



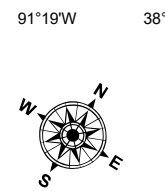
| LEGEND | | | | | |
|--------------------|----------|--------------------|--------------|--------------------------|----------------|
| [Red line] | < 8 | [Red line] | < 8 ft | [Green square] | Green Passing |
| [Yellow line] | 8 - 9 | [Yellow line] | 8 - 9 ft | [Red triangle] | Red Passing |
| [Light green line] | 9 - 9.5 | [Light green line] | 9 - 10 ft | [Green diamond] | Green Crossing |
| [Cyan line] | 9.5 - 10 | [Cyan line] | 10 - 12 ft | [Red diamond with cross] | Red Crossing |
| [Light blue line] | 10 - 12 | [Black line] | River Mile | [Red line] | Levee |
| [Blue line] | 12 - 14 | [Black line] | Sailing Line | [Black line] | BSNP Structure |
| [Dark blue line] | 14 - 16 | [Red line] | Levee | | |
| [Dark blue line] | > 16 | | | | |

LEGEND

| | | | |
|---------------------|----------|-------------|-----------|
| [Green buoy symbol] | Green | [Green dot] | Green CAN |
| [Red buoy symbol] | Red | [Red dot] | Red NUN |
| [Junction symbol] | Junction | | |

Buoy

Scale: 0 312.5 625 937.5 1,250 2,500 Feet



NOTES:
 Horizontal Coordinate System:
 World Geodetic System of 1984 (WGS84), projected to the Universal Transverse Mercator (UTM) Zone 15 North. Distance units in U.S. Survey Feet
 Vertical Datum:
 Soundings are shown in feet and indicated depths are referenced to water surface at time of collection.
 The information depicted on this map represents the results of a survey conducted on the date indicated and can only be considered to represent the general condition existing at that time.
 The location of navigation aids are based on and provided by the U.S. Coast Guard.

Sheet Number
 42 of 46

Source: Esri, Maxar, GeoEye, Earthstar Geographics, CNES/Airbus DS, USDA, USGS, AeroGRID, IGN, and the GIS User Community